

INDUSTRIAL PRINTERS *Ready. Reliable. Perform.*

DESKTOP PRINTERS *Super easy to install and use*

High Performance

Built for mission critical applications and 24x7 operation

PX4i/PX6i



Mid-Range

Rugged, 3rd generation platform designed for mainstream applications

PM43/PM43c



Commercial

For light duty industrial and commercial applications

PD41/PD42



Desktop

For low volume labeling applications

PC23/PC43



Key Markets	Warehouse, Distribution Center, Manufacturing, Transportation & Logistics, Healthcare	Warehouse, Distribution Center, Manufacturing, Transportation & Logistics, Healthcare	Warehouse, Distribution Center, Manufacturing, Transportation & Logistics, Healthcare	Transportation & Logistics, Healthcare, Retail, Small and medium sized businesses - Manufacturing & Warehouse
Typical Volume (labels/day)	5,000-10,000+	2,000-7,000	1,000-4,000	Typically less than 2 rolls or 1,000 labels per day
Max. Media Width (mm)	120/170	114	118	60/118
Connectivity				
Max. Print Speed (ips)	12/9	12	6	8 (203 dpi), 6 (300 dpi)
Resolution (dpi)	203, 300, 406	203, 300, 406	203, 300	200, 300 (user changeable)
RFID Option	Yes	Yes	No	Yes
Printer Languages	Fingerprint, IPL, Zsim (ZPL), Dsim (DPL)	Fingerprint, IPL, Zsim (ZPL), Dsim (DPL)	Fingerprint, IPL, Zsim (ZPL), Dsim (DPL)	Direct Protocol (DP), Fingerprint, IPL, ESim (EPL) ZSim (ZPL), DSim (DPL)



MOBILE PRINTERS *Fast. Rugged. Fit.*

Rugged Label

For demanding printing environments where accuracy and speed are key performance indicators.

PB22/PB32/PB50



Rugged Receipt

For demanding printing environments where performance and reliability are critical for success.

PB21/PB31/PB51



Durable Receipt

Comfortable for all day wear and designed for light volume receipt printing applications.

PR2/PR3



Workboard Printers

For specialty applications where full page or integrated solutions are required.

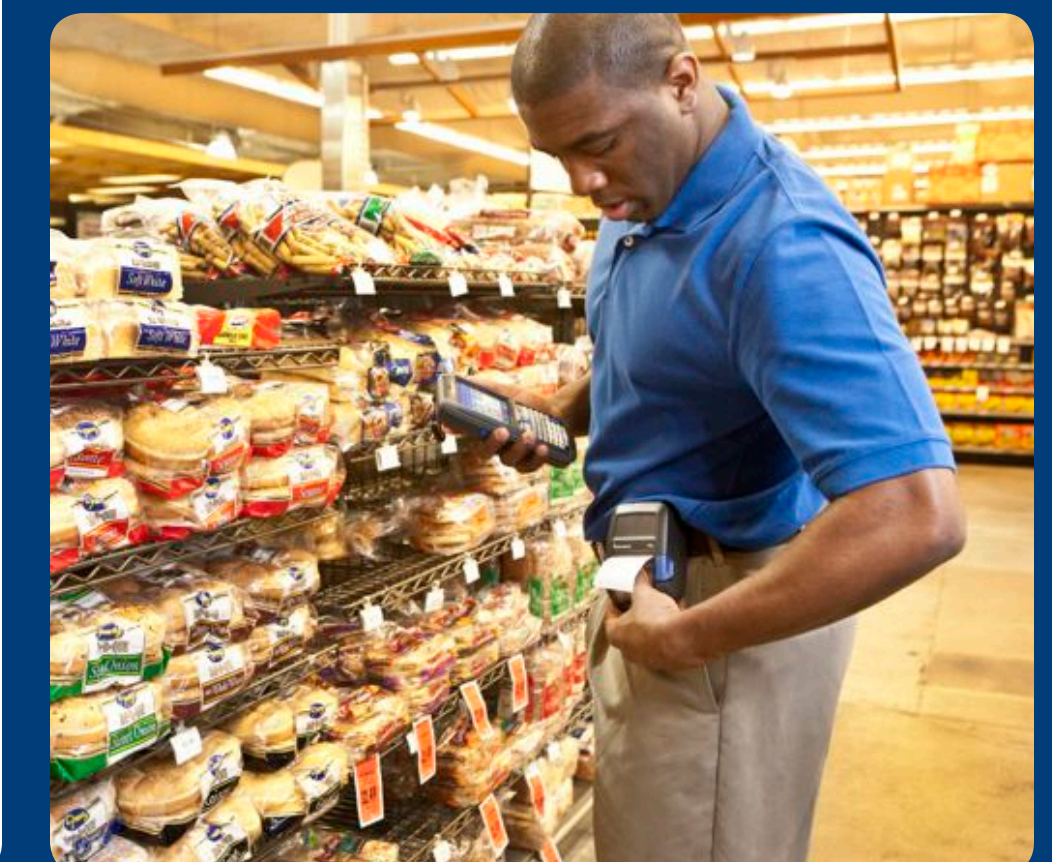
PW50 Workboard Printer



6822 Full Page Printer



Key Markets	Warehouse, Healthcare, Retail In-Store	Field Service/Sales, Direct Store Delivery, Public Safety: e-Citation	Field Service/Sales, Direct Store Delivery, Public Safety: e-Citation, Mobile Point of Sale	Direct Store Delivery, Route Accounting, Field Service/Sales	Direct Store Delivery, Route Accounting, Field Service/Sales
Max. Media Width (mm)	54/84/112	57/84/112	58/80	112	216
Connectivity				RS-232, DEX / UCS,	Mobile computer socket,
Max. Print Speed (ips)	4	4	3	4	2 Pages/min
Ruggedness (Drop Spec)	1.5m/5ft - 26 times	1.5m/5ft - 26 times	1.2m/4ft - 26 times	1.2m/4ft - 26 times	0.9m/3ft
IP Rating	54	54	42 (54 w/optional case)	20	20
Languages	IPL, Fingerprint, Zsim (ZPL), ESC-P, Dsim (DPL), Csim (CPCL)	IPL, Fingerprint, Zsim (ZPL), ESC-P, Dsim (DPL), Csim (CPCL)	ESC-P, Csim (CPCL), Xsim	ESC-P	ESC-P



- Over forty years of barcode printing firsts
- Broadest AIDC product portfolio designed for customer needs
- A leader in network connectivity & security
 - IPv6 Support, WPA2, CCX and WiFi Certified
- Smart Printing programmability for custom applications and solutions, no PC required
- Optimized media for your customers' printing needs
- Localized program and support that drive results